

GROWTH OF MANUFACTURING SECTOR

CHART 1

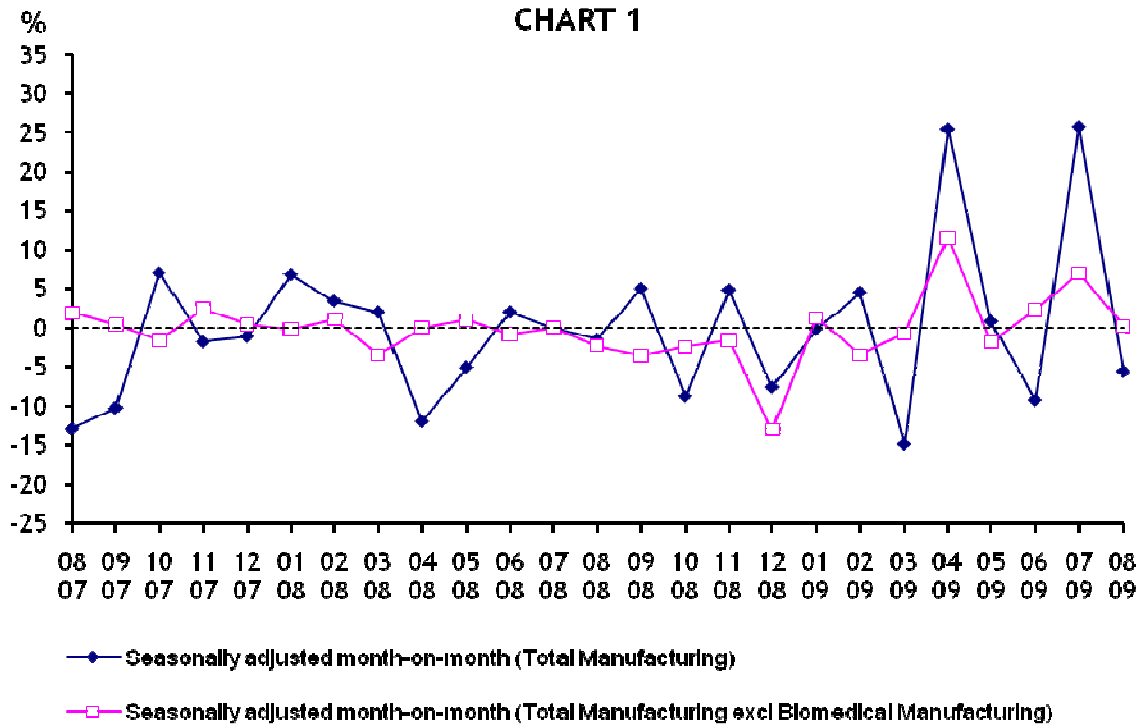


CHART 2

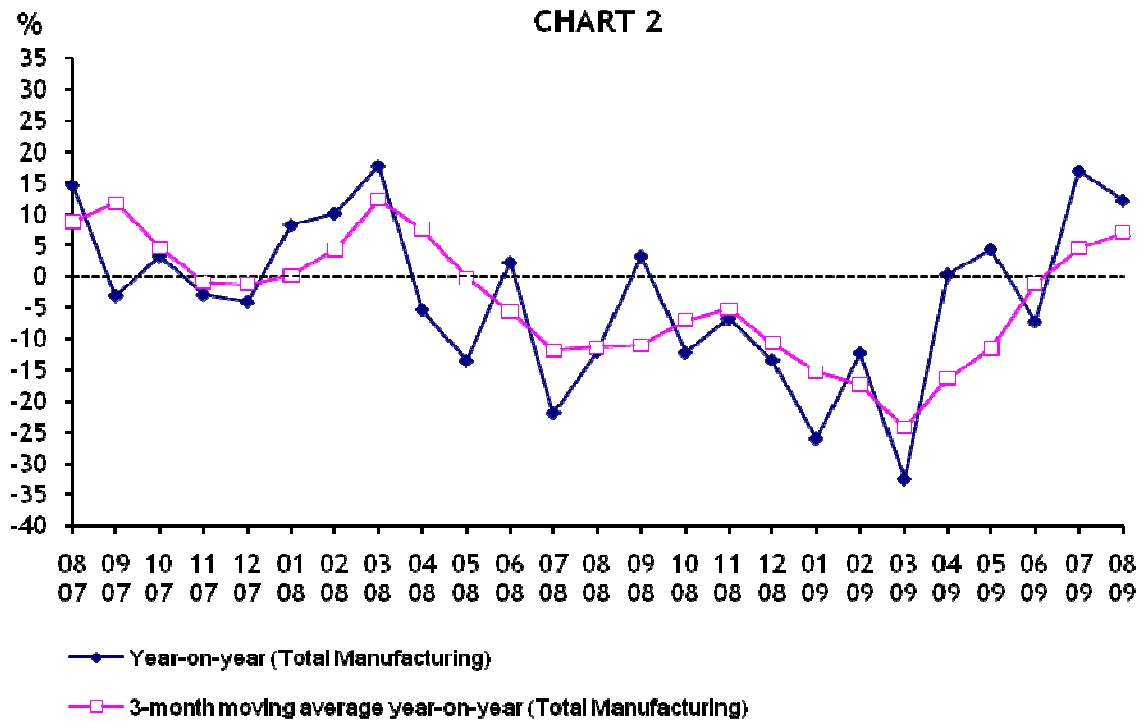


TABLE 1 : MANUFACTURING SECTOR GROWTH

Period	NSA INDEX Total Mfg (2007 = 100)	YOY GROWTH (%) Total Mfg	SA INDEX Total Mfg	SA MOM GROWTH (%) Total Mfg	SA INDEX Total Mfg excl Biomedical Mfg	SA MOM GROWTH (%) Total Mfg excl Biomedical Mfg
2007 Aug	103.6	14.7	104.7	-12.9	100.8	1.9
Sep	99.9	-3.0	93.9	-10.3	101.2	0.4
Oct	103.5	3.4	100.5	7.0	99.6	-1.6
Nov	101.8	-2.9	98.7	-1.8	102.1	2.5
Dec	101.1	-4.0	97.6	-1.1	102.5	0.4
2008 Jan	100.7	8.3	104.2	6.8	102.3	-0.2
Feb	96.0	10.2	107.7	3.4	103.4	1.1
Mar	116.6	17.8	109.9	2.0	99.8	-3.5
Apr	91.8	-5.3	96.7	-12.0	99.8	0.0
May	85.5	-13.5	91.8	-5.1	100.8	1.0
Jun	98.1	2.3	93.6	2.0	100.0	-0.8
Jul	93.3	-21.9	93.5	-0.1	100.0	0.0
Aug	91.2	-12.0	92.1	-1.5	97.7	-2.3
Sep	103.2	3.3	96.7	5.0	94.2	-3.6
Oct	90.9	-12.2	88.2	-8.8	91.9	-2.4
Nov	95.0	-6.7	92.4	4.8	90.4	-1.6
Dec	87.6	-13.4	85.4	-7.6	78.6	-13.1
2009 Jan	74.5	-26.0	85.2	-0.2	79.6	1.3
Feb	84.2	-12.3	89.0	4.5	76.8	-3.5
Mar	78.7	-32.5	75.7	-14.9	76.3	-0.7
Apr	92.2	0.4	94.9	25.4	85.1	11.5
May	89.3	4.4	95.7	0.8	83.6	-1.8
Jun	91.0	-7.2	86.8	-9.3	85.5	2.3
Jul	109.2	17.0	109.1	25.7	91.5	7.0
Aug*	102.4	12.3	103.0	-5.6	91.7	0.2

Note:

- * - Preliminary
- NSA Index - Non seasonally adjusted index
- MOM - Month-on-month
- YOY - Year-on-year

TABLE 2: PERFORMANCE BY CLUSTERS

Industry Cluster	2008 Value Added Share (%)	% change over corresponding period of previous year				% change of 3-month moving average over corresponding period of previous year		
		Jun 09	Jul 09	Aug 09*	Cum Jan - Aug 09	Jun 09	Jul 09	Aug 09*
Electronics	26.3	-19.2	-5.9	-6.4	-23.8	-21.2	-15.6	-10.4
Semiconductors	16.4	-15.9	-12.0	-7.6	-21.1	-16.7	-14.1	-11.8
Computer Peripherals	2.6	-20.7	44.4	32.1	-16.1	-27.1	-3.9	16.9
Data Storage	3.2	-12.4	-19.5	-33.6	-30.9	-21.2	-21.9	-22.5
Infocomms & Consumer Electronics	2.5	-39.4	-23.4	-23.1	-41.2	-37.5	-35.3	-30.0
Other Electronic Modules & Components	1.6	-25.4	-7.1	-6.2	-30.0	-24.5	-17.5	-13.1
Biomedical Manufacturing	22.2	18.0	158.9	97.8	28.9	64.9	92.7	83.0
Pharmaceuticals	19.7	21.2	177.0	108.1	31.8	73.8	104.4	92.3
Medical Technology	2.5	-11.6	12.0	-7.5	-4.7	-8.1	-1.7	-3.1
Chemicals	10.2	-9.8	-2.4	-4.5	-15.6	-16.5	-10.4	-5.6
Petroleum	0.2	-12.6	-13.2	-16.4	-14.8	-17.1	-14.4	-14.0
Petrochemicals	5.3	-9.7	17.6	15.4	-13.8	-17.9	-6.4	7.2
Specialties	3.8	-8.3	-6.6	-8.7	-19.6	-15.1	-10.4	-7.8
Others	0.9	-0.9	-3.4	4.7	-12.6	-12.1	-3.8	-0.1

TABLE 2: PERFORMANCE BY CLUSTERS (Continued)

Industry Cluster	2008 Value Added Share (%)	% change over corresponding period of previous year				% change of 3-month moving average over corresponding period of previous year		
		Jun 09	Jul 09	Aug 09*	Cum Jan - Aug 09	Jun 09	Jul 09	Aug 09*
Precision Engineering	14.0	-16.2	-17.5	-12.7	-22.2	-20.9	-18.8	-15.5
Machinery & Systems	6.5	-17.5	-19.6	-8.2	-21.3	-20.2	-20.8	-15.4
Precision Modules & Components	7.5	-14.9	-15.9	-16.3	-23.0	-21.5	-17.0	-15.7
Transport Engineering	16.1	-11.0	-11.8	-2.5	-0.2	-2.0	-10.5	-8.6
Marine & Offshore Engineering	9.3	-15.2	-11.2	-1.8	2.0	-0.8	-13.2	-9.8
Aerospace	5.8	-2.3	-5.9	-7.0	2.1	2.0	-2.4	-5.0
Land	1.0	-30.4	-44.7	25.4	-28.7	-36.1	-36.7	-21.3
General Manufacturing Industries	11.2	-0.9	-5.1	-4.2	-7.1	-5.6	-4.6	-3.4
Printing	2.9	-20.1	-13.8	-13.3	-19.1	-21.1	-19.2	-15.7
Food, Beverages & Tobacco	2.8	-2.2	-2.5	-6.6	-5.2	-4.5	-2.9	-3.8
Miscellaneous Industries	5.4	9.4	-2.3	1.3	-2.1	1.7	1.7	2.6
Total Manufacturing	100.0	-7.2	17.0	12.3	-6.7	-1.1	4.6	7.1
Manufacturing excluding Biomedical Manufacturing	77.8	-13.7	-7.8	-6.1	-16.6	-15.4	-13.0	-9.2

* Preliminary

TABLE 3: MONTHLY INDEX OF INDUSTRIAL PRODUCTION BY INDUSTRY CLUSTER, AUGUST 2007 TO AUGUST 2009

Period	Electronics						Biomedical Manufacturing			Chemicals					
	Total	Semi-conductors	Computer Peripherals	Data Storage	Infocomms & Consumer Electronics	Other Electronic Modules & Components	Total	Pharmaceuticals	Medical Technology	Total	Petroleum	Petrochemicals	Specialties	Others	
2007 = 100															
2007	Aug	102.6	98.3	98.3	105.3	122.1	101.7	107.1	107.9	96.3	100.7	105.1	98.3	100.0	90.1
	Sep	118.0	111.1	100.9	121.8	166.2	104.6	72.0	69.1	108.3	96.5	100.5	93.4	98.0	85.3
	Oct	107.5	112.1	95.1	106.8	104.8	102.6	103.3	102.1	117.8	101.5	106.1	98.2	101.1	93.7
	Nov	104.4	102.6	112.0	102.6	103.3	106.4	97.1	96.5	105.8	100.9	102.7	102.6	99.9	89.6
	Dec	111.4	107.1	118.4	123.1	110.2	112.3	80.5	79.2	97.5	100.9	103.7	103.7	96.5	90.6
2008	Jan	100.4	99.5	126.0	110.7	64.7	108.3	101.6	101.8	98.6	104.3	102.8	103.4	110.9	94.7
	Feb	94.2	103.0	93.4	95.8	57.7	96.8	115.1	116.6	96.0	96.7	98.5	94.4	101.9	80.8
	Mar	97.1	90.4	116.1	118.9	76.5	119.7	168.1	173.9	95.5	104.0	104.5	103.3	109.4	88.5
	Apr	91.7	97.3	95.3	103.4	52.0	97.1	74.5	71.8	109.2	102.4	101.8	102.4	107.4	90.4
	May	86.5	88.8	95.4	95.0	52.5	100.0	53.0	49.7	94.4	103.7	107.5	103.0	106.0	81.0
	Jun	98.6	103.7	109.9	92.0	67.2	110.1	86.6	84.5	112.5	100.8	101.2	95.8	110.1	89.7
	Jul	101.3	115.7	95.8	99.6	49.1	104.3	60.5	58.2	88.8	98.6	101.0	89.6	106.5	96.3
	Aug	96.9	105.0	98.2	112.2	46.4	105.1	70.1	68.8	85.9	94.9	101.5	83.6	101.9	84.4
	Sep	100.9	105.1	111.2	111.0	57.5	115.6	103.2	103.8	96.4	99.4	98.4	98.4	105.6	90.1
	Oct	93.1	102.2	93.3	96.6	46.6	106.6	72.6	70.6	98.3	94.3	102.7	89.4	91.7	80.6
	Nov	83.6	84.5	106.5	93.9	39.9	98.2	115.0	117.0	90.1	80.2	96.5	69.2	71.4	69.8
	Dec	71.7	70.6	101.3	69.0	42.0	80.8	97.4	96.9	103.7	77.5	95.3	69.0	61.9	70.8
2009	Jan	56.5	62.6	65.1	54.9	26.0	51.0	87.4	87.8	82.1	79.1	94.6	73.0	68.5	59.1
	Feb	59.7	60.2	76.8	73.3	30.7	53.6	123.8	126.4	90.3	76.0	85.5	69.0	71.5	70.5
	Mar	63.6	70.5	67.3	60.5	36.5	57.3	81.1	79.3	102.5	81.4	87.0	77.1	79.5	76.5
	Apr	71.6	78.6	68.1	85.0	35.7	69.4	124.2	126.2	99.3	80.9	80.2	82.8	85.0	65.5
	May	66.7	75.6	64.0	63.2	31.0	80.4	126.7	129.5	91.8	84.5	88.9	78.0	88.7	74.9
	Jun	79.7	87.2	87.2	80.6	40.7	82.1	102.2	102.4	99.5	90.9	88.4	86.5	101.0	88.9
	Jul	95.3	101.9	138.3	80.2	37.6	96.9	156.7	161.2	99.4	96.2	87.7	105.4	99.5	93.0
	Aug *	90.7	97.0	129.6	74.5	35.6	98.6	138.6	143.2	79.4	90.6	84.9	96.5	93.1	88.4

TABLE 3: MONTHLY INDEX OF INDUSTRIAL PRODUCTION BY INDUSTRY CLUSTER, AUGUST 2007 TO AUGUST 2009 (Continued)

Period	Precision Engineering			Transport Engineering				General Manufacturing Industries				Total Manu- facturing	Manufacturing excluding Biomedical Manufacturing	
	Total	Machinery & Systems	Precision Modules & Components	Total	Marine & Offshore Engineering	Aerospace	Land	Total	Printing	Food, Beverages & Tobacco	Miscella- neous Industries			
2007 = 100														
2007	Aug	101.6	97.3	105.3	102.6	111.2	93.2	99.3	106.3	102.7	105.8	108.4	103.6	102.6
	Sep	107.0	115.3	100.0	99.4	97.3	104.1	84.7	102.5	105.4	101.8	101.4	99.9	108.2
	Oct	100.0	96.1	103.4	97.9	97.8	94.9	117.4	103.6	103.3	101.7	104.7	103.5	103.6
	Nov	100.4	102.5	98.6	103.9	111.8	97.4	87.5	104.7	110.8	102.6	102.4	101.8	103.2
	Dec	105.6	121.5	92.2	110.6	122.9	97.3	104.3	100.1	98.3	101.1	100.5	101.1	107.3
2008	Jan	97.2	94.4	99.5	93.7	89.7	99.0	90.0	107.5	101.3	120.4	104.5	100.7	100.4
	Feb	80.8	79.6	81.9	90.7	89.6	89.6	106.0	80.6	79.7	89.1	77.0	96.0	90.3
	Mar	102.9	111.9	95.2	109.7	106.7	105.1	159.2	99.5	100.6	105.2	96.2	116.6	101.2
	Apr	94.7	93.5	95.7	103.7	104.1	102.6	108.1	102.2	99.7	105.0	102.2	91.8	97.0
	May	92.5	94.2	91.0	107.4	114.1	102.2	91.2	102.0	100.9	105.5	100.9	85.5	95.2
	Jun	99.5	107.4	92.7	113.3	117.7	108.3	113.3	101.3	97.7	105.4	101.1	98.1	101.5
	Jul	96.1	93.7	98.2	116.4	123.3	105.6	133.7	108.7	100.4	110.2	112.2	93.3	103.1
	Aug	91.1	87.3	94.2	102.2	101.0	105.8	88.9	106.0	98.6	108.9	108.5	91.2	97.5
2009	Sep	103.3	110.2	97.5	109.7	115.7	103.5	104.8	108.3	99.0	107.4	113.6	103.2	103.2
	Oct	87.4	83.2	91.0	108.4	111.8	105.7	100.4	107.0	97.7	109.3	110.6	90.9	96.4
	Nov	81.8	85.4	78.7	111.8	120.5	105.5	88.2	102.7	95.7	110.1	102.6	95.0	89.0
	Dec	83.2	97.3	71.2	117.9	122.2	118.9	81.7	101.2	88.6	116.2	100.5	87.6	84.7
	Jan	61.9	62.7	61.2	98.4	105.2	95.2	69.2	86.8	71.5	101.0	87.8	74.5	70.6
	Feb	64.3	65.1	63.7	106.4	107.9	106.6	93.8	81.8	71.7	91.6	82.3	84.2	72.4
	Mar	75.5	81.0	70.8	110.2	108.6	116.0	86.3	88.6	79.8	101.7	86.8	78.7	78.0
	Apr	72.2	77.1	68.1	118.9	134.4	110.4	59.5	94.0	79.8	97.3	99.7	92.2	82.6
	May	71.2	69.8	72.4	98.2	99.0	103.3	61.2	94.0	77.3	101.3	99.1	89.3	78.1
	Jun	83.4	88.6	78.9	100.9	99.7	105.8	78.9	100.4	78.1	103.1	110.6	91.0	87.7
	Jul	79.3	75.3	82.6	102.7	109.5	99.5	73.9	103.2	86.5	107.5	109.6	109.2	95.0
	Aug *	79.5	80.2	78.8	99.7	99.2	98.4	111.5	101.6	85.5	101.8	109.9	102.4	91.6

* Preliminary