

GROWTH OF MANUFACTURING SECTOR

CHART 1

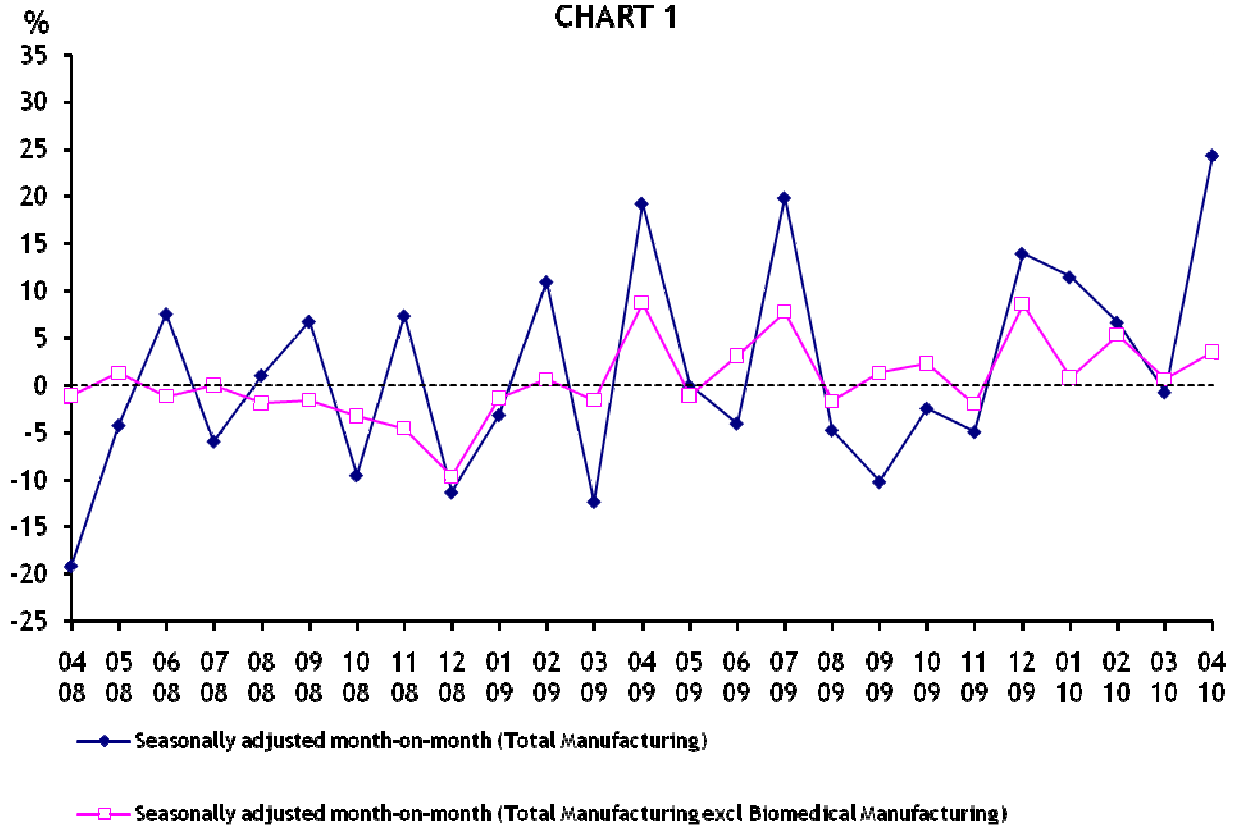


CHART 2

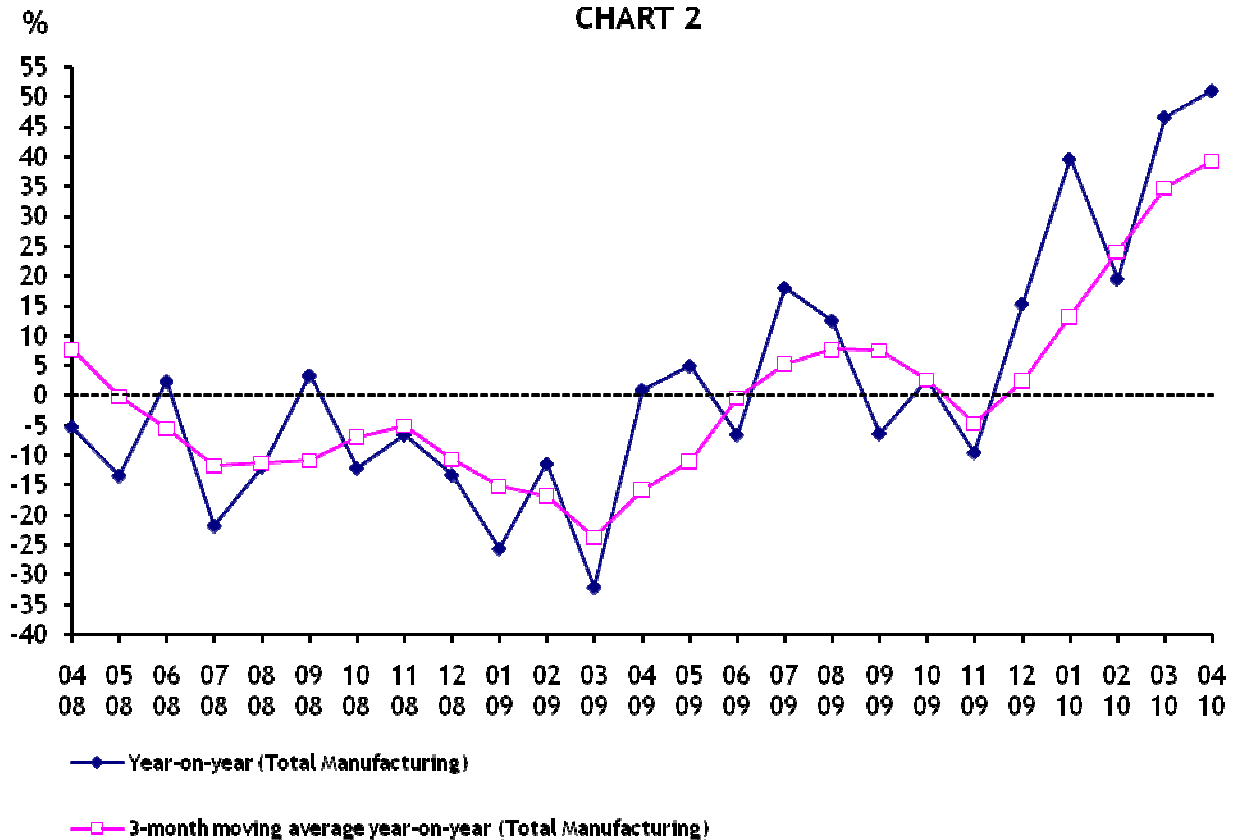


TABLE 1 : MANUFACTURING SECTOR GROWTH

Period	NSA INDEX Total Mfg (2007 = 100)	YOY GROWTH (%) Total Mfg	SA INDEX Total Mfg	SA MOM GROWTH (%) Total Mfg	SA INDEX Total Mfg excl Biomedical Mfg	SA MOM GROWTH (%) Total Mfg excl Biomedical Mfg		
2008	Apr	91.8	-5.3	93.6	-19.2	99.3	-1.1	
	May	85.5	-13.5	89.6	-4.3	100.6	1.3	
	Jun	98.1	2.3	96.3	7.5	99.4	-1.2	
	Jul	93.3	-21.9	90.5	-6.0	99.4	0.0	
	Aug	91.2	-12.0	91.4	1.0	97.5	-1.9	
	Sep	103.2	3.3	97.5	6.7	95.9	-1.6	
	Oct	90.9	-12.2	88.1	-9.6	92.7	-3.3	
	Nov	95.0	-6.7	94.5	7.3	88.4	-4.6	
	Dec	87.6	-13.4	83.7	-11.4	79.8	-9.7	
	2009	Jan	74.8	-25.7	81.0	-3.2	78.7	-1.4
		Feb	85.0	-11.5	89.8	10.9	79.2	0.6
		Mar	79.0	-32.2	78.7	-12.4	77.9	-1.6
Apr		92.5	0.8	93.8	19.2	84.7	8.7	
May		89.7	4.9	93.7	-0.1	83.8	-1.1	
Jun		91.6	-6.6	89.9	-4.1	86.4	3.1	
Jul		110.1	18.0	107.7	19.8	93.1	7.8	
Aug		102.6	12.5	102.5	-4.8	91.5	-1.7	
Sep		96.6	-6.4	91.9	-10.3	92.7	1.3	
Oct		93.3	2.6	89.6	-2.5	94.8	2.3	
Nov		85.9	-9.6	85.1	-5.0	92.9	-2.0	
Dec		101.0	15.3	96.9	13.9	100.9	8.6	
2010	Jan	104.4	39.6	107.9	11.4	101.7	0.8	
	Feb	101.6	19.5	115.0	6.6	107.1	5.3	
	Mar	115.8	46.6	114.1	-0.8	107.7	0.6	
	Apr*	139.7	51.0	141.8	24.3	111.5	3.5	

Note:

- * - Preliminary
- NSA Index - Non seasonally adjusted index
- MOM - Month-on-month
- YOY - Year-on-year

TABLE 2: PERFORMANCE BY CLUSTERS

Industry Cluster	2009 Value Added Share (%)	% change over corresponding period of previous year				% change of 3-month moving average over corresponding period of previous year		
		Feb 10	Mar 10	Apr 10*	Cum Jan - Apr 10	Feb 10	Mar 10	Apr 10*
Electronics	30.6	55.3	76.9	60.0	67.6	64.3	70.8	64.0
Semiconductors	19.6	94.4	101.0	97.8	99.2	96.6	99.8	97.9
Computer Peripherals	5.1	2.0	27.7	7.5	17.1	16.0	20.2	11.8
Data Storage	2.2	11.3	63.2	0.1	28.6	34.9	41.5	21.3
Infocomms & Consumer Electronics	2.8	11.3	32.9	8.7	25.4	21.9	31.7	18.1
Other Electronic Modules & Components	0.9	53.6	60.9	34.1	57.5	50.6	67.6	48.4
Biomedical Manufacturing	20.8	12.6	66.4	95.8	54.9	14.0	37.6	57.1
Pharmaceuticals	17.8	13.1	70.7	101.7	58.1	14.1	39.6	60.4
Medical Technology	3.0	2.9	24.2	2.2	9.7	11.4	12.5	10.1
Chemicals	4.5	9.5	22.1	24.8	18.7	18.4	16.7	19.0
Petroleum	-0.4	-19.0	0.7	7.2	-7.9	-15.6	-12.3	-4.1
Petrochemicals	0.0	42.5	40.5	39.9	42.1	50.0	42.9	40.9
Specialties	3.6	24.2	34.8	29.8	34.0	47.3	35.6	29.8
Others	1.3	10.7	27.7	36.4	32.5	31.6	31.2	24.7

TABLE 2: PERFORMANCE BY CLUSTERS (Continued)

Industry Cluster	2009 Value Added Share (%)	% change over corresponding period of previous year				% change of 3-month moving average over corresponding period of previous year		
		Feb 10	Mar 10	Apr 10*	Cum Jan - Apr 10	Feb 10	Mar 10	Apr 10*
Precision Engineering	12.9	38.2	60.9	56.2	50.3	31.5	48.3	52.5
Machinery & Systems	5.9	53.8	78.0	70.8	61.9	32.4	58.7	68.4
Precision Modules & Components	6.9	24.1	44.0	41.8	39.3	30.6	38.4	37.1
Transport Engineering	19.4	-17.6	-12.0	-23.2	-16.3	-14.5	-13.7	-17.8
Marine & Offshore Engineering	12.3	-23.1	-20.2	-39.3	-27.0	-22.2	-21.9	-28.3
Aerospace	6.2	-10.0	-6.2	-5.5	-5.8	-11.4	-5.9	-7.2
Land	0.9	-25.5	12.7	33.1	6.7	36.3	0.4	2.8
General Manufacturing Industries	11.8	3.9	23.6	17.0	16.0	8.3	15.6	15.2
Printing	2.8	-8.8	15.7	15.5	9.9	1.9	7.9	8.0
Food, Beverages & Tobacco	3.5	2.1	10.5	6.0	6.7	0.8	6.9	6.4
Miscellaneous Industries	5.5	10.6	34.6	22.8	23.6	15.3	23.9	23.0
Total Manufacturing	100.0	19.5	46.6	51.0	39.4	24.0	34.8	39.2
Manufacturing excluding Biomedical Manufacturing	79.2	23.1	40.4	31.0	32.9	28.2	33.6	31.6

* Preliminary

TABLE 3: MONTHLY INDEX OF INDUSTRIAL PRODUCTION BY INDUSTRY CLUSTER, APRIL 2008 TO APRIL 2010

Period	Electronics						Biomedical Manufacturing			Chemicals					
	Total	Semi-conductors	Computer Peripherals	Data Storage	Infocomms & Consumer Electronics	Other Electronic Modules & Components	Total	Pharmaceuticals	Medical Technology	Total	Petroleum	Petrochemicals	Specialties	Others	
2007 = 100															
2008	Apr	91.7	97.3	95.3	103.4	52.0	97.1	74.5	71.8	109.2	102.4	101.8	102.4	107.4	90.4
	May	86.5	88.8	95.4	95.0	52.5	100.0	53.0	49.7	94.4	103.7	107.5	103.0	106.0	81.0
2009	Jun	98.6	103.7	109.9	92.0	67.2	110.1	86.6	84.5	112.5	100.8	101.2	95.8	110.1	89.7
	Jul	101.3	115.7	95.8	99.6	49.1	104.3	60.5	58.2	88.8	98.6	101.0	89.6	106.5	96.3
	Aug	96.9	105.0	98.2	112.2	46.4	105.1	70.1	68.8	85.9	94.9	101.5	83.6	101.9	84.4
	Sep	100.9	105.1	111.2	111.0	57.5	115.6	103.2	103.8	96.4	99.4	98.4	98.4	105.6	90.1
	Oct	93.1	102.2	93.3	96.6	46.6	106.6	72.6	70.6	98.3	94.3	102.7	89.4	91.7	80.6
	Nov	83.6	84.5	106.5	93.9	39.9	98.2	115.0	117.0	90.1	80.2	96.5	69.2	71.4	69.8
	Dec	71.7	70.6	101.3	69.0	42.0	80.8	97.4	96.9	103.7	77.5	95.3	69.0	61.9	70.8
	Jan	58.2	62.6	77.2	54.9	25.0	51.0	87.4	87.8	82.1	79.1	94.6	73.0	68.7	59.0
	Feb	61.8	60.2	91.8	73.3	29.5	53.6	125.0	127.8	90.3	76.1	85.6	69.0	71.9	70.5
	Mar	65.0	70.5	78.8	60.5	34.9	57.3	82.0	80.3	102.5	81.0	85.5	77.1	80.2	76.5
	Apr	73.2	78.5	81.1	85.0	33.9	69.6	124.2	126.2	99.3	80.5	79.0	82.8	85.4	65.5
	2010	May	68.2	75.5	74.7	63.2	29.8	80.6	126.7	129.5	91.8	84.6	88.9	78.0	89.0
Jun		81.7	87.1	102.9	80.6	39.2	82.3	102.2	102.4	99.5	91.1	88.7	86.5	101.4	88.9
Jul		98.6	100.3	168.6	80.2	35.6	96.9	156.7	161.2	99.5	96.2	87.5	105.4	99.6	92.8
Aug		93.7	96.3	155.9	74.7	33.9	98.2	138.5	143.0	82.0	90.5	85.0	96.0	93.2	87.9
Sep		103.1	101.9	179.5	88.2	38.5	108.9	88.9	87.6	105.3	90.8	82.6	97.0	96.9	88.4
Oct		108.3	116.0	170.7	82.2	38.0	104.8	73.0	70.2	108.1	92.3	85.2	99.7	97.5	83.2
Nov		95.7	109.5	109.9	78.7	40.2	99.3	58.8	55.4	101.5	93.4	84.5	104.4	96.0	87.4
Dec		114.0	135.7	116.3	97.7	46.3	100.0	84.3	81.0	125.8	98.9	85.5	111.9	106.9	91.0
2010	Jan	105.1	127.3	103.7	86.6	38.6	96.9	127.9	131.0	89.0	93.4	77.6	106.4	102.1	94.6
	Feb	96.0	117.0	93.6	81.5	32.8	82.3	140.8	144.6	92.9	83.4	69.3	98.3	89.3	78.0
	Mar	115.0	141.7	100.6	98.8	46.4	92.1	136.4	137.1	127.3	98.9	86.1	108.3	108.1	97.7
	Apr *	117.1	155.2	87.1	85.1	36.9	93.3	243.2	254.5	101.5	100.5	84.7	115.9	110.8	89.4

TABLE 3: MONTHLY INDEX OF INDUSTRIAL PRODUCTION BY INDUSTRY CLUSTER, APRIL 2008 TO APRIL 2010 (Continued)

Period	Precision Engineering			Transport Engineering				General Manufacturing Industries				Total Manu- facturing	Manufacturing excluding Biomedical Manufacturing	
	Total	Machinery & Systems	Precision Modules & Components	Total	Marine & Offshore Engineering	Aerospace	Land	Total	Printing	Food, Beverages & Tobacco	Miscella- neous Industries			
2007 = 100														
2008	Apr	94.7	93.5	95.7	103.7	104.1	102.6	108.1	102.2	99.7	105.0	102.2	91.8	97.0
	May	92.5	94.2	91.0	107.4	114.1	102.2	91.2	102.0	100.9	105.5	100.9	85.5	95.2
	Jun	99.5	107.4	92.7	113.3	117.7	108.3	113.3	101.3	97.7	105.4	101.1	98.1	101.5
	Jul	96.1	93.7	98.2	116.4	123.3	105.6	133.7	108.7	100.4	110.2	112.2	93.3	103.1
	Aug	91.1	87.3	94.2	102.2	101.0	105.8	88.9	106.0	98.6	108.9	108.5	91.2	97.5
	Sep	103.3	110.2	97.5	109.7	115.7	103.5	104.8	108.3	99.0	107.4	113.6	103.2	103.2
	Oct	87.4	83.2	91.0	108.4	111.8	105.7	100.4	107.0	97.7	109.3	110.6	90.9	96.4
	Nov	81.8	85.4	78.7	111.8	120.5	105.5	88.2	102.7	95.7	110.1	102.6	95.0	89.0
	Dec	83.2	97.3	71.2	117.9	122.2	118.9	81.7	101.2	88.6	116.2	100.5	87.6	84.7
2009	Jan	60.9	63.6	58.7	98.1	104.6	95.2	69.2	85.6	71.8	100.9	85.4	74.8	71.0
	Feb	62.6	64.8	60.7	107.4	110.1	106.6	93.7	80.8	72.4	91.6	79.9	85.0	73.1
	Mar	74.3	80.7	68.9	109.7	107.5	116.0	86.1	88.1	80.3	101.7	85.6	79.0	78.1
	Apr	71.2	76.9	66.3	118.5	133.7	110.4	59.3	93.4	79.5	98.0	98.3	92.5	83.0
	May	70.1	69.7	70.4	98.2	99.1	103.3	60.9	94.3	77.6	101.3	99.5	89.7	78.6
	Jun	82.4	88.8	77.0	101.2	100.3	105.8	78.7	100.7	78.0	102.9	111.4	91.6	88.4
	Jul	77.6	75.5	79.4	102.7	109.6	99.5	73.9	104.5	86.8	107.3	112.3	110.1	96.2
	Aug	77.7	78.9	76.7	96.5	92.7	98.5	111.0	100.9	85.7	101.9	108.1	102.6	91.9
	Sep	89.2	93.8	85.3	100.7	104.3	96.5	101.6	105.1	85.5	107.6	113.9	96.6	98.9
	Oct	83.7	82.5	84.7	90.6	88.7	90.7	102.7	108.4	91.0	106.6	118.1	93.3	99.4
	Nov	84.4	86.1	82.9	90.1	90.7	88.0	98.2	105.6	93.4	103.5	113.0	85.9	94.0
	Dec	98.1	110.5	87.6	100.9	96.1	93.8	180.4	104.6	88.0	109.0	111.0	101.0	106.0
2010	Jan	87.2	88.5	86.2	86.9	81.2	94.2	83.1	101.3	83.3	108.5	107.1	104.4	97.4
	Feb	86.5	99.7	75.3	88.5	84.7	96.0	69.8	83.9	66.0	93.6	88.4	101.6	89.9
	Mar	119.5	143.5	99.2	96.5	85.8	108.8	97.1	108.8	92.9	112.4	115.2	115.8	109.6
	Apr *	111.2	131.4	94.1	91.0	81.2	104.3	79.0	109.3	91.8	103.8	120.7	139.7	108.8

* Preliminary