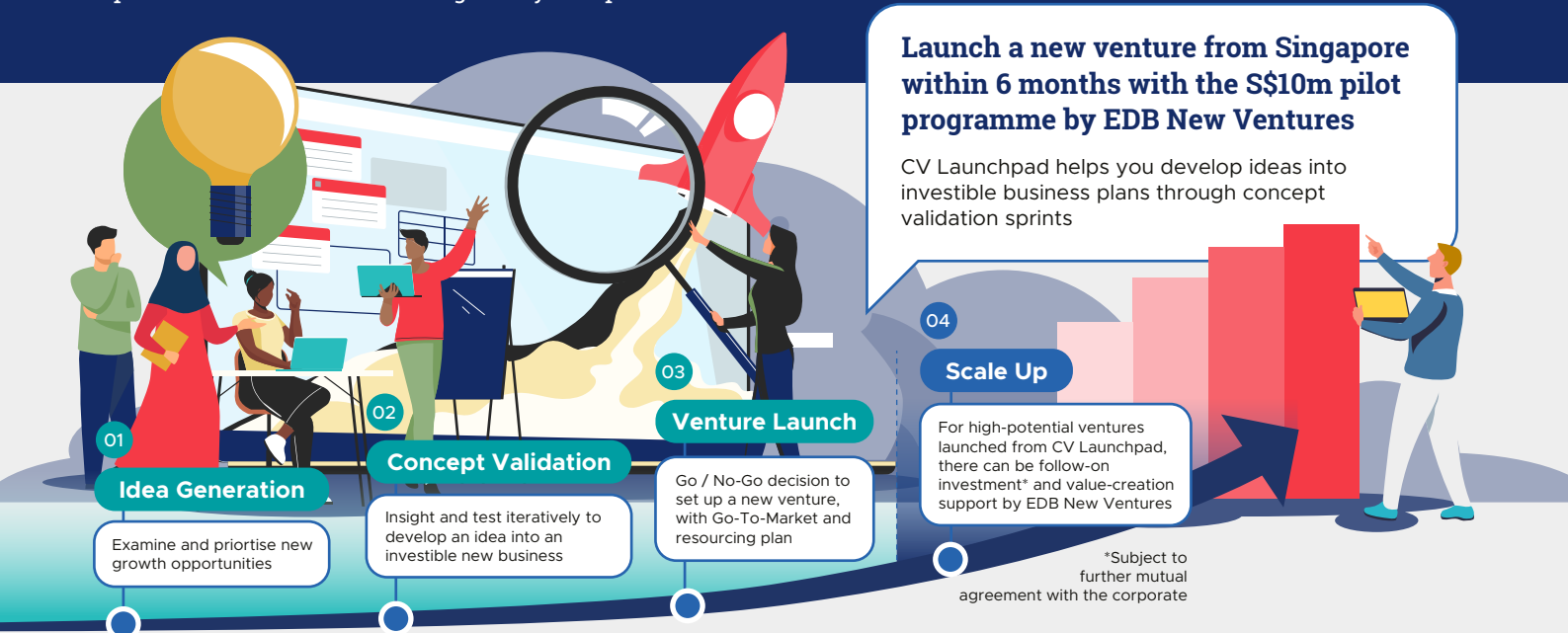


# Corporate Venture Launchpad: Driving Disruption and Growth



The Corporate Venture (CV) Launchpad is a fast-track programme for you to incubate and launch new ventures from Singapore with potential to scale to become globally competitive businesses



**Corporate Venture Launchpad helps you partner with qualified venture studios that bring best-in-class venture-building expertise, methodologies and talent.**



- S\$5b enterprise value for corporate ventures built in Southeast Asia
- Experienced team with over 350 years of collective corporate venture experience in SEA



- Singapore-headquartered with track record of scaling corporate ventures in Southeast Asia and network of 200+ serial entrepreneurs
- Incubated ventures are typically valued between US\$7.5m to US\$15m by the end of incubation and reach valuation of US\$250m at exit



- Over 380 corporate ventures built and scaled up globally in the last five years
- 700+ business builders and 5,000+ full-stack technical experts globally



- 100% of corporate ventures that get launched from sprints go on to successfully raise seed, Series A and/or Series B (or equivalent)
- Proprietary methodology and research methods designed by our unique cadre of successful entrepreneurs, top-tier VCs, and C-Suite executives



- 3-year return on investment of 5.5x for corporate partners on their venture-building investments
- Co-investment uniquely available from day 1 of each sprint, sharing risk and minimising upfront fees

Data above is provided by each respective venture studio

**Start your corporate venture journey today**

[Learn more about the Corporate Venture Launchpad and how you can apply](#)

Contact EDB New Ventures at [new\\_ventures@edb.gov.sg](mailto:new_ventures@edb.gov.sg) for queries about Corporate Venture Launchpad