

## Agri-Food ●

### Asia Sustainable Foods Platform

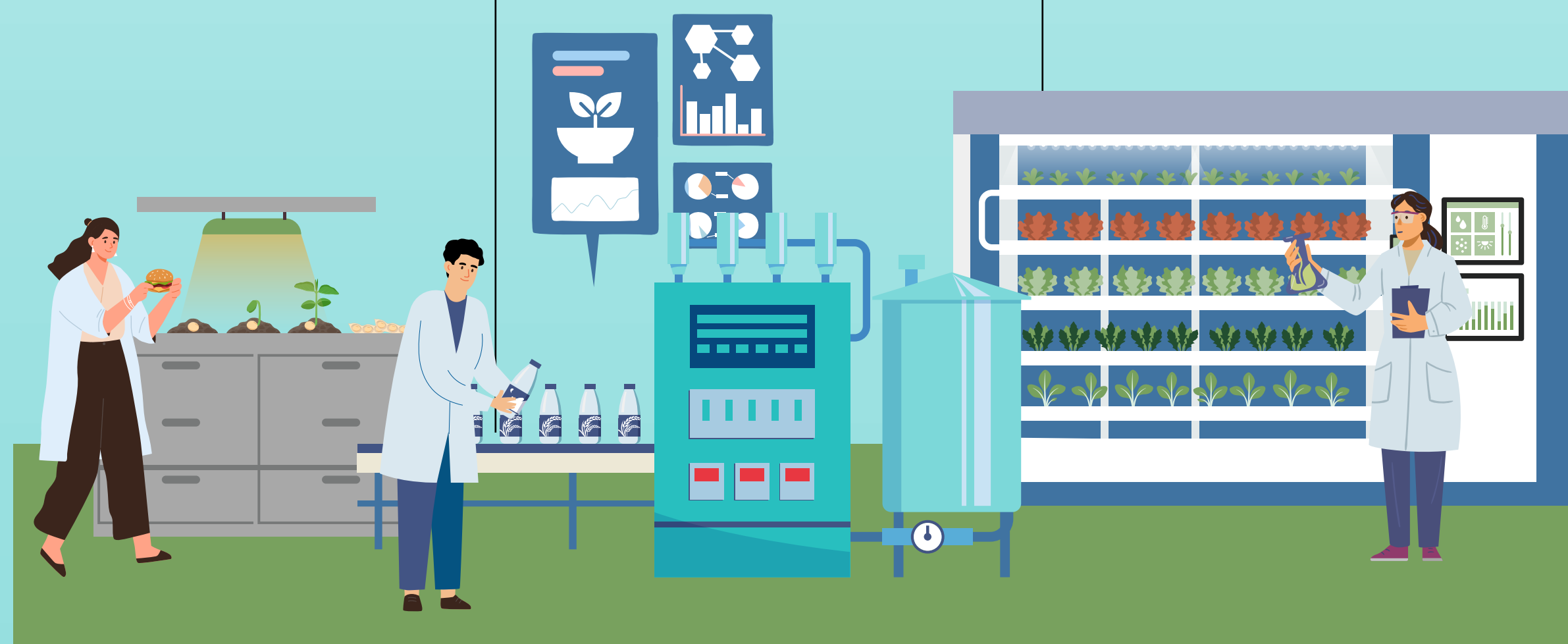
Launched by global investment firm Temasek, the platform will address the challenges of scaling up the production of alternative proteins, as well as accelerating the growth of sustainable foods in Asia.

### Oatly

The leading oat drink company and producer of dairy alternatives such as milk, ice-cream and yoghurt, has set up an oat drink production plant with a co-packaging/distribution agreement with local beverage player Yeo Hiap Seng (Yeo's). The facility will produce 60 million litres of oat milk a year.

### Signify Centre of Excellence for Horticulture

The virtual centre—Signify's first knowledge-based set-up outside of the Netherlands—provides profound research insights and advanced lighting solutions for high-tech growers in Singapore and the region.



## Carbon and Sustainability Services ●

### Bureau Veritas – Innovation Centre for Alternative Energy (iCARE)

Supported by EDB, iCARE will work with industry partners to develop new digital services and standards, and explore alternative fuel technologies to accelerate the decarbonisation of the maritime sector.

### Climate Impact X (CIX)

Founded by DBS Bank, Temasek, Standard Chartered and Singapore Exchange, CIX is a global marketplace and exchange for high-quality carbon credits.

CIX's current focus is on natural climate solutions, protecting and restoring natural ecosystems like forests and mangroves.

### McKinsey Asia Sustainability Innovation Hub

The EDB-supported hub, named Vivid, helps governments and businesses across Asia navigate the implications of climate change and transform economies and organisations towards net-zero carbon emissions.

### PwC APAC Centre for Sustainability Excellence (CSE)

The CSE aims to help organisations achieve Environmental, Social and Governance (ESG) corporate excellence in areas such as decarbonisation, managing climate risks, sustainable finances, responsible investments, nature-based solutions, and ESG upskilling and capacity-building for Singapore.



## Decarbonisation ●

### Arkema – Plant for Bio-based Polymers

The plant is Arkema's biggest investment and the world's largest manufacturing facility for bio-based polymers. Built on Jurong Island, it could lead to the creation of 150 new jobs. It will produce sustainable materials used in fast-growing sectors, including new energy vehicles, 3D printing, consumer goods and electronics.

### NUS-Shell Collaboration on Carbon Capture and Utilisation (CCU)

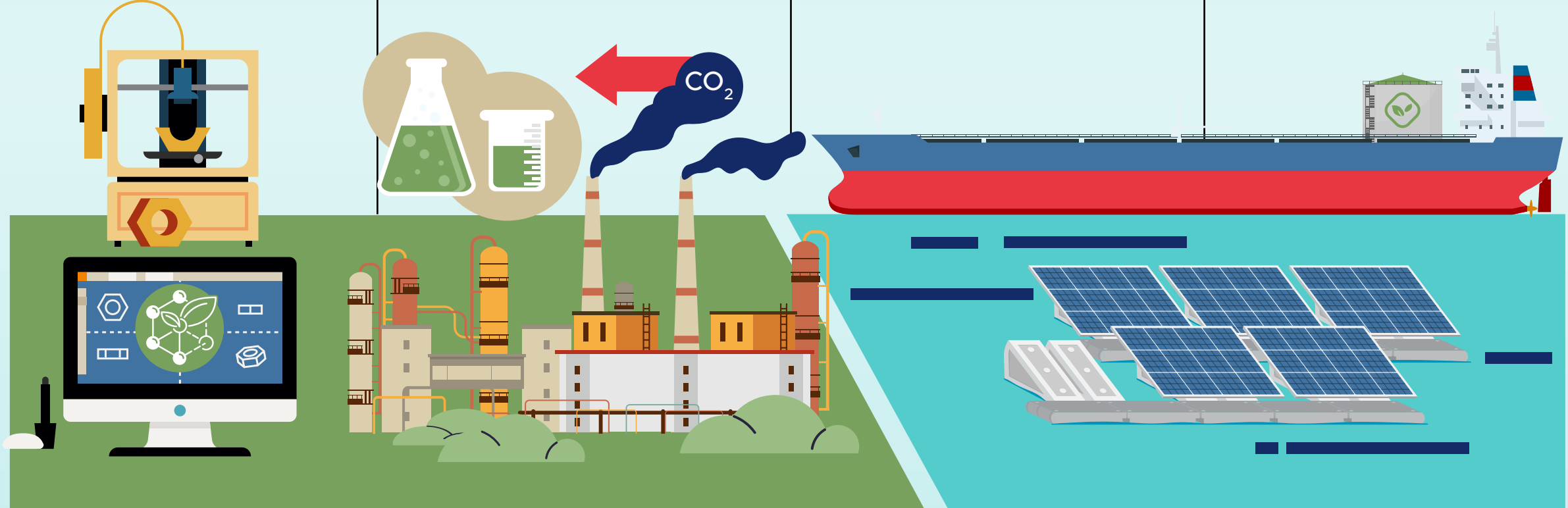
The National University of Singapore (NUS) and Shell started a three-year research programme to jointly develop processes to use carbon dioxide—a by-product of industrial processes—to produce cleaner fuels and useful chemicals.

### Marine Biofuel Bunkering Trial

The pilot project between BHP, Oldendorff and Goodfuels, with support from the Maritime and Port Authority of Singapore (MPA), aims to determine biofuels as a potential low-carbon fuel of the future. The first trial was completed successfully with sustainable biofuel supplied in Singapore.

### Sembcorp Tengeh Floating Solar Farm

With solar panels spanning 45 hectares (equivalent to about 45 football fields) at Tengeh Reservoir, the solar photovoltaic (PV) farm—by Sembcorp and national water agency PUB—is one of the world's largest inland floating PV projects. This makes Singapore one of the few countries to have a 100% green waterworks system.



## Circular Economy ●

### Dole Specialty Ingredients (DSI)

This new venture by food producer Dole Sunshine Company, partnered with EDB, sources fruit side-streams and unused fruit parts, and repurposes them into high-value natural products such as enzymes, extracts, seed oils and fibres. The specialty ingredients can then be used in the pharmaceutical, nutraceutical, cosmeceutical, F&B and other industries.

### Nestle R&D Centre Expansion Project

The expanded R&D centre—supported by EDB—includes a new regional R&D accelerator that provides an open innovation platform for the company's employees, start-ups, and students to co-innovate, develop and test the prototypes commercially in the regional markets.

Nestle is also looking at innovation and new product development in new areas such as plant-based proteins, biodegradable packing and by-product valorisation.



Singapore—at the heart of Asia and as an active global citizen—takes great interest in supporting investors, corporates and organisations to catalyse the growth of the green economy. If you would like to discuss further opportunities, please contact EDB at

[client\\_services@edb.gov.sg](mailto:client_services@edb.gov.sg).