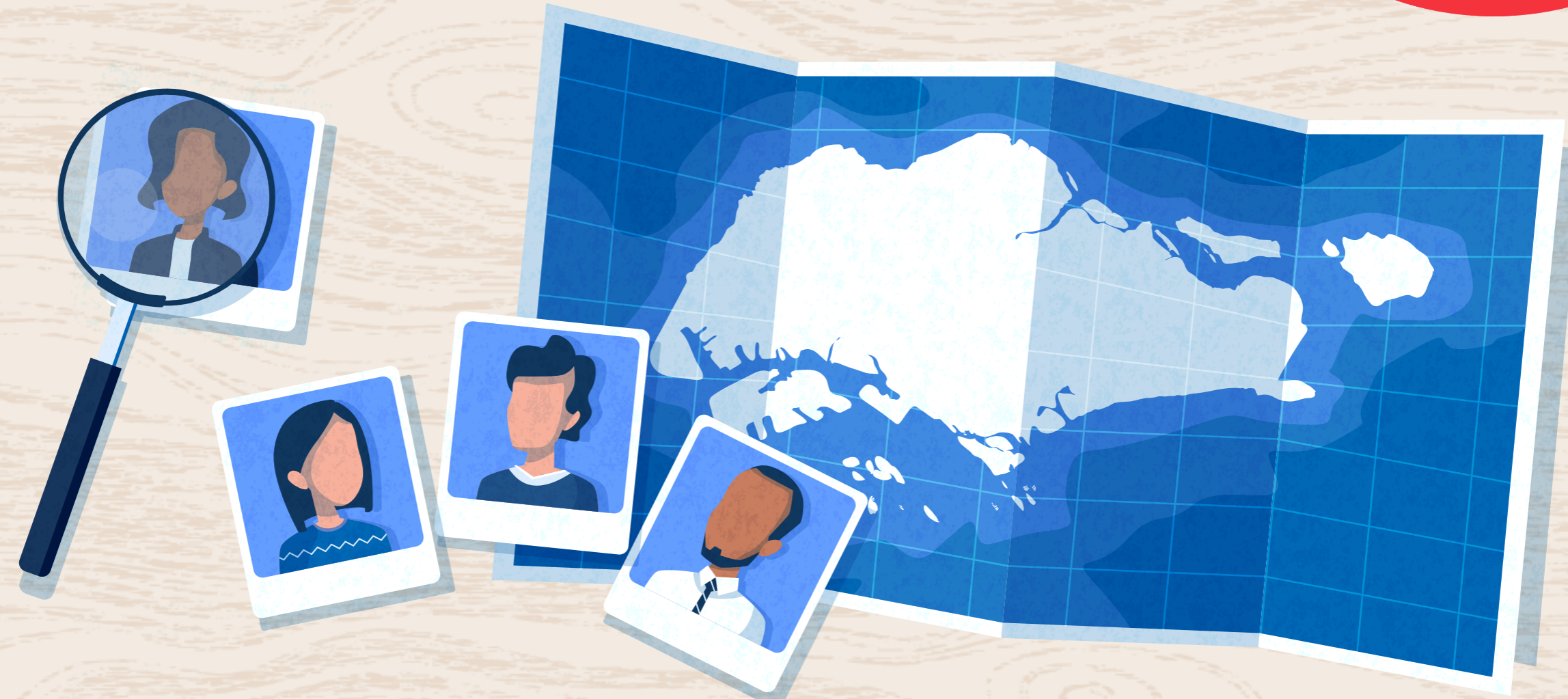


# Building or growing your team in Singapore?

Companies incorporated here can tap on these government support services and schemes to hire different talents for your needs!



## Scout for talent with specific skill sets

Obtain free recruitment services

Hire the right talent through [Employment and Employability Institute \(e2i\)](#)'s complimentary one-stop, personalised recruitment service:

1. Discuss with e2i to identify your manpower and training needs
2. e2i partners with you to identify relevant manpower support programmes
3. e2i assists with recruitment, connecting you to a pool of ready jobseekers



Find out more about e2i's services

[go.gov.sg/e2ijsc](http://go.gov.sg/e2ijsc)

## Hire and train experienced PMETs

Enjoy salary support and course subsidies

Hire and train mid-career Singaporeans or Singapore Permanent Resident Professionals, Managers, Executives and Technicians (PMETs) with cross-industry skillsets under the [Professional Conversion Programmes \(PCPs\)](#) which offer companies salary support, training programmes and course subsidies.

- ~100 PCPs available
- ~30 Sectors eligible
- 3-24 months to complete

Under PCP, companies can look forward to\*

Salary Support

Course Subsidies

Visit the [PCP website](#) for full details on support and subsidies

\* Terms and conditions apply



Find out more about PCP

[go.gov.sg/pcp](http://go.gov.sg/pcp)

## Tap on experienced mid-career individuals

Co-fund just 20% of training allowance for industry attachments

Apply as a host organisation under [SGUnited Mid-Career Pathways](#) to gain access to a pool of experienced mid-career individuals and consider well-performing individuals for permanent roles. Attachment positions approved by the Singapore Business Federation can be listed on [mycareersfuture.sg](http://mycareersfuture.sg) and opened up to applicants.

- \$1.4K-\$3K Estimated monthly training allowance
- 80% Co-funded by government
- 9 Months Maximum period for attachments

**Eligibility** Companies must provide clear **attachment descriptions and development plans**



Find out more about the programme

[go.gov.sg/sguattach](http://go.gov.sg/sguattach)

## Check out more resources



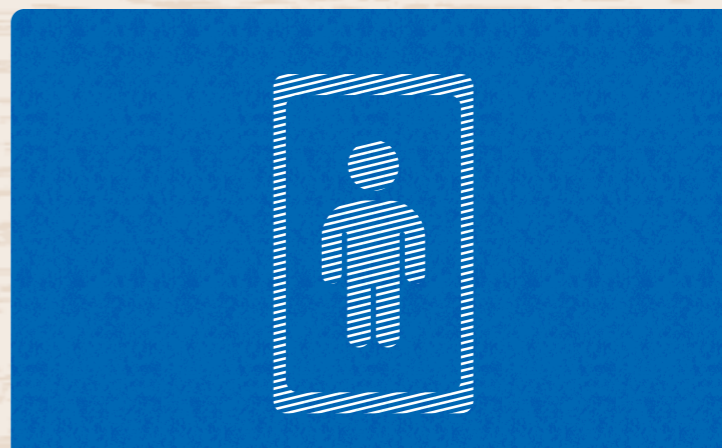
Building your first team in SEA? Learn great tips from an experienced recruiter.

[go.gov.sg/seatalent](http://go.gov.sg/seatalent)



Take these 3 steps to build a new work culture for COVID-19 and beyond.

[go.gov.sg/workcul](http://go.gov.sg/workcul)



Check out this guide for everything you need to know on hiring talent in Singapore.

[go.gov.sg/techtal](http://go.gov.sg/techtal)

